

How We've Grown



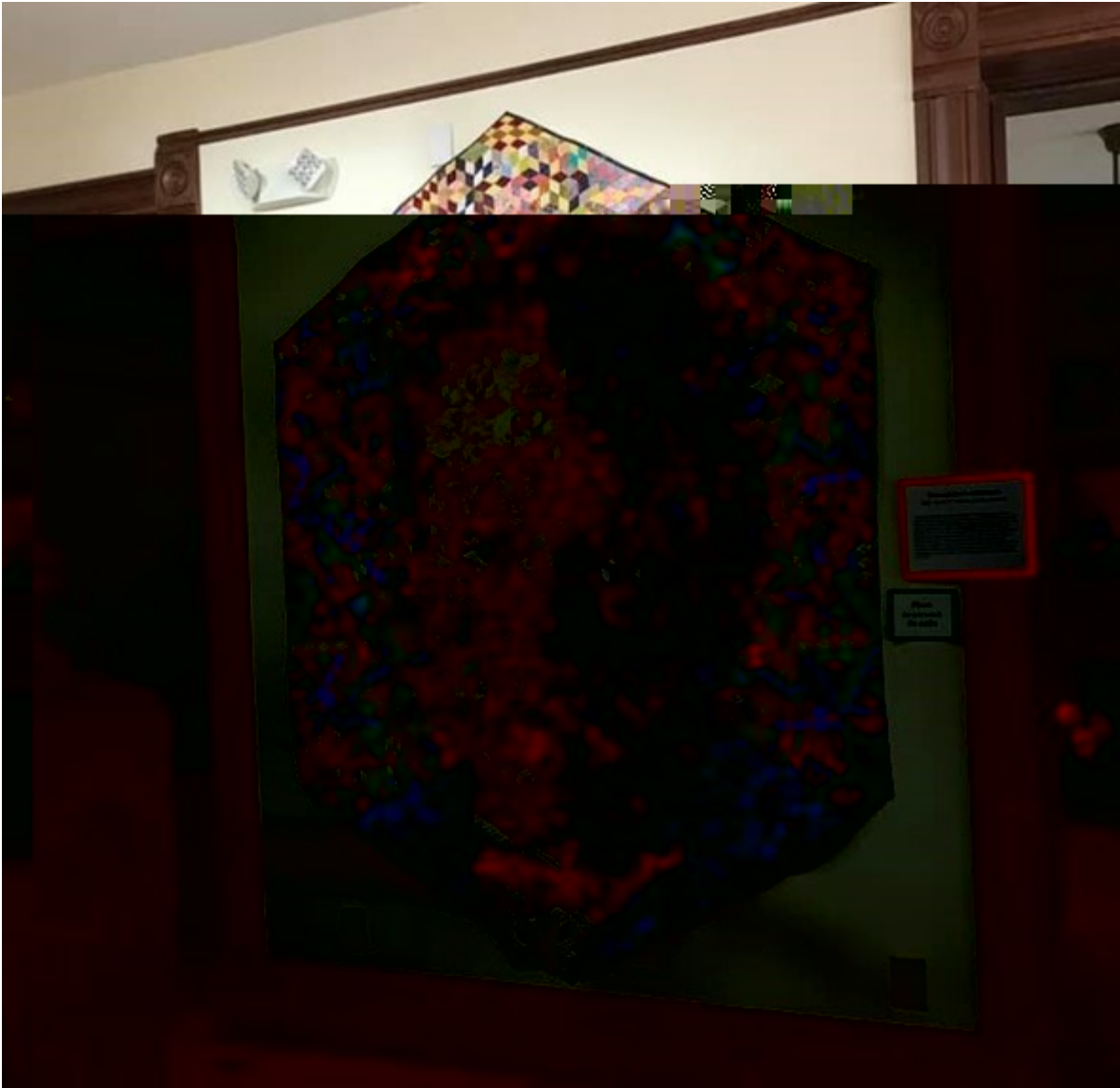
Museums can be understood as places where quasi-sacred rituals take place. Rituals that define legitimate objects, legitimate artists and legitimate viewers... Museum space facilitates an art-for-art's sake experience by employing a series of architectural and display cues: isolated rooms, small labels, white walls, spotlighted pedestals, space to stand back from works and grasp their effect... The museum, which is structured to appear neutral, objective and disinterested...

"Discourse and Display: The Modern Eye, Entrepreneurship, and the Cultural

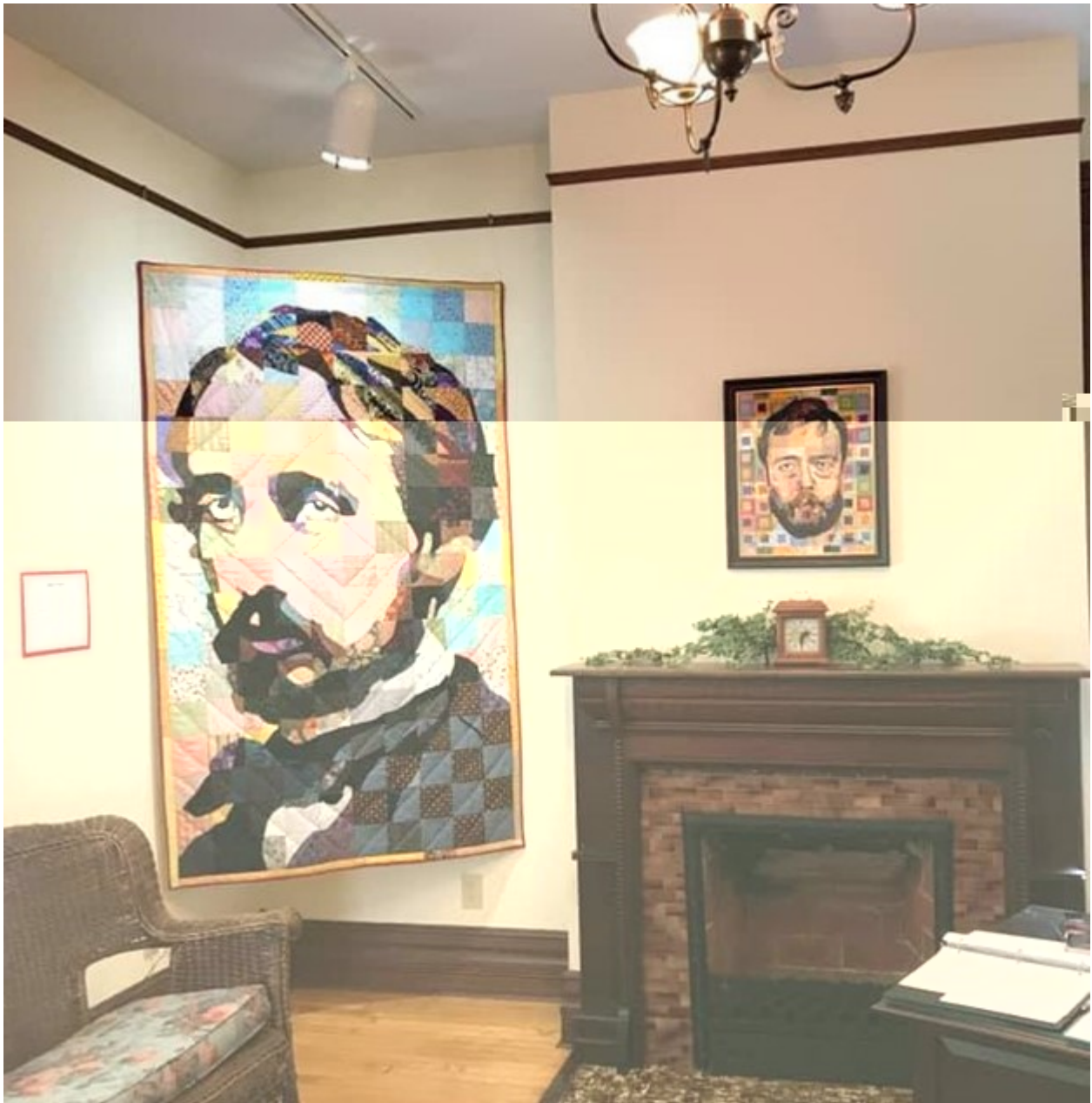
Transformation of the Patchwork Quilt," Sociological Perspectives. Vol 46, Number 4, 2003



Trip the Light Quilt
Tessellation Quilt



Thomas Eakins Hexagon



*Edgar Degas
Portrait*

Self-



